

PLAT OF TOWN OF JUPITER ISLAND MUNICIPAL SITE

BEING A REPLAT OF LOTS 172 THRU 181, BLOCK 82, TOGETHER WITH:
LOTS F, G, H, J, K, L, M, N & P AND LOTS 182 THRU 188 AND LOTS
191 THRU 197, BLOCK 83, THE ISLAND BEACH REVISED PLAT NO. 2,
ACCORDING TO THE PLAT THEREOF, AS RECORDED IN PLAT BOOK 2 AT
PAGE 44 OF THE PUBLIC RECORDS OF MARTIN COUNTY, FLORIDA.
CONTAINING 8.588 ACRES, MORE OR LESS.

TOWN OF JUPITER ISLAND
MARTIN COUNTY, FLORIDA
SHEET 2 OF 2 SHEETS

CLERK'S RECORDING CERTIFICATE

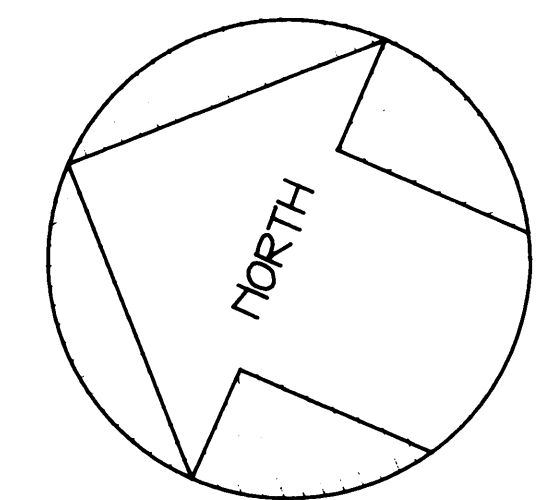
I, MARSHA EWING, CLERK OF THE CIRCUIT COURT OF MARTIN COUNTY, FLORIDA, HEREBY CERTIFY THAT THIS PLAT WAS FILED FOR RECORD IN PLAT BOOK 15 PAGE 35, MARTIN COUNTY PUBLIC RECORDS, THIS 13 DAY OF August 2002.

MARSHA EWING, CLERK OF THE CIRCUIT COURT MARTIN COUNTY, FLORIDA
BY: *Paul Wood, D.C.*
DEPUTY CLERK

FILE NO.: 1592445

Sheet 2 of 2

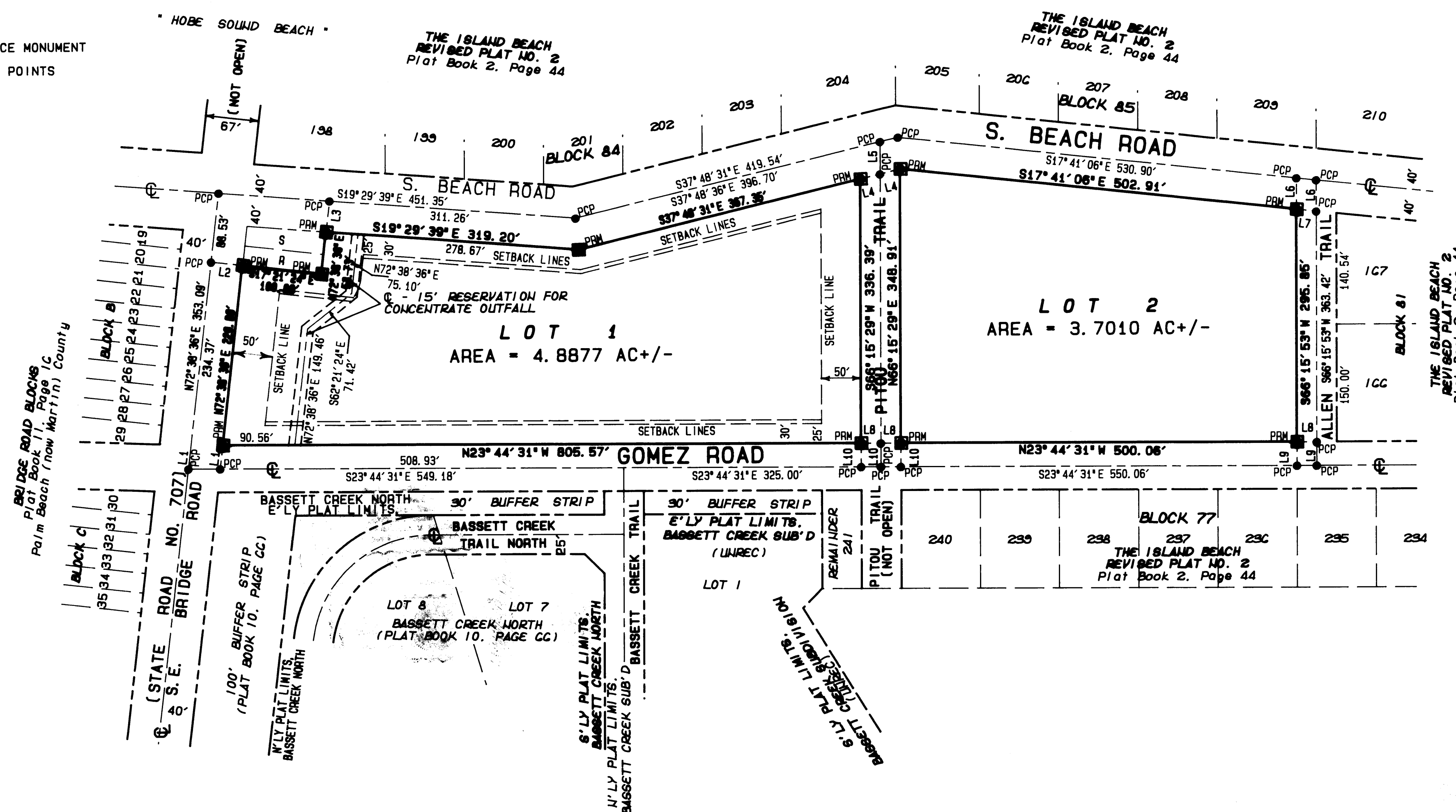
SUBDIVISION PARCEL CONTROL NUMBER:
35-38-42-038-000-0000.0



SCALE: 1" = 100'

LEGEND

- PRM DENOTES PERMANENT REFERENCE MONUMENT
- PCP DENOTES PERMANENT CONTROL POINTS
- P. I. POINT OF INTERSECTION
- R/W RIGHT-OF-WAY
- (D) DEED CALLS
- C CENTERLINE

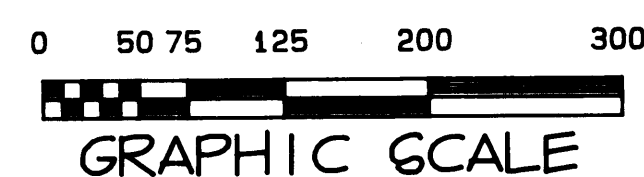


LINE TABLE

NO.	BEARING	DISTANCE
L1	N72° 38' 36" E	30.19'
L2	S17° 21' 23" E	40.00'
L3	S72° 38' 36" W	40.03'
L4	S37° 48' 41" E	25.77'
L5	S66° 15' 29" W	41.24'
L6	S66° 15' 29" W	40.22'
L7	N17° 41' 06" W	25.14'
L8	N23° 44' 31" W	25.00'
L9	N66° 15' 29" E	30.00'
L10	N66° 15' 29" E	30.00'

GENERAL NOTES

BEARINGS SHOWN HEREON ARE BASED ON TRUE BEARINGS (FLORIDA STATE PLANE COORDINATES SYSTEM - EAST ZONE - NAD 27) AS SHOWN ON THE PLAT OF THE COASTAL CONSTRUCTION CONTROL LINE, PLAT BOOK 9, PAGE 99, RECORDED JULY 9, 1985, LYING BETWEEN DEPARTMENT OF NATURAL RESOURCES MONUMENTS *89 84 A02* AND *89 84 A03*.
BUILDABLE AREA OF LOTS 1 AND 2, ARE LOCATED IN FLOOD ZONE *C*.



R. L. VAUGHT & ASSOCIATES, INC.
SURVEYING, MAPPING & PLANNING
LICENSING BOARD NUMBER 5879
9075 GE BRIDGE ROAD, HOPE SOUND 33455
MAIL: P. O. BOX 160 HOPE SOUND, FL 33475
PHONE: 772-546-8086 FAX: 772-546-8087

ORDER NO.: 807032 F. B.: 1C*2/28 MARCH 27, 2002